



[→ Product Website](#)

The FDU2603WT was developed for ECDIS and radar systems. It has impressive optimal legibility when used on the bridge. It satisfies the requirements in terms of temperature, air humidity and vibration set out in the international standard for navigation and radio communication devices for shipping (IEC 60945).

- ✓ Wide Dimming Range with very low Brightness
- ✓ ECDIS Calibrated Colours
- ✓ Clear View and Wide Viewing Angles
- ✓ Approval from Classification Societies
- ✓ Durable and Reliable, Long-Lasting LED Backlight
- ✓ 24/7 Use, 3 Years Warranty

Image quality

Precise, high-contrast, bright and crisp screen

Calibrated for ECDIS

Backlight brightness, gamma, and RGB color settings are calibrated at the factory so the monitor achieves accurate color reproduction for meeting the highly specialized requirements of ECDIS systems. The monitor meets IEC 61174, IEC 62288, and IEC 62388 international standards for ECDIS systems and radar applications.

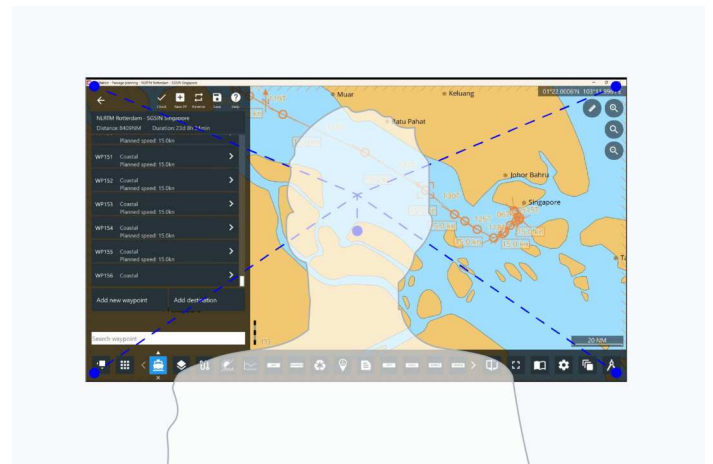


Large dimming range for changing light conditions

Suitable for day and night operation: Thanks to the wide dimming range from less than 1 cd/m² to 470 cd/m², the monitor is ideally suited to changing light conditions. This means that the brightness of the monitor can be optimally configured for all ambient lighting and can be used without problems even in dark rooms.

High contrast and color accuracy from all angles of view

The VA panel with wide viewing angle ensures that the contrast hardly falls when viewing the screen from any angle and there are only minimal differences in color. This means that exact color rendering and clear images can be achieved even in the corners of the screen.



FOR THE SAKE OF THE EYES

Flicker free

The monitor is flicker-free at every brightness setting. This is great for users, as their eyes will not tire as quickly, allowing them to work in front of the screen for longer periods of time without fatigue.

Touch functionality Operation with finger or touch-pen

Touchscreen: fast and secure

Thanks to the capacitive touchscreen, the monitor can be operated using a finger or touch pen. Typing, dragging, rotating, minimizing – everything works quickly and directly. In addition, it is highly resistant to dust and water droplets, preventing unintentional entries.



Durability And reliability

Reliable on the high seas

Heat, cold, vibration – the monitor is able to withstand the permanent strains of the maritime environment. It fulfills the IEC 60945 device standard for the fields of the environment and electromagnetic compatibility required for the licensing of maritime equipment. It also boasts an IP65 rating, and is even protected against dust and hose water getting into it. Other properties: A special coating protects the electronics from moisture. And the ventila-

tor of the monitor can be accessed easily for a simple replacement.



Approval from maritime classifications

The monitor meets the requirements for major maritime classifications with approvals for LR (UK), DNV (Norway/Germany), ABS (USA) NK (Japan) and EU RO MR.



Three-year warranty

EIZO grants a three-year warranty. This is possible thanks to the highly developed production process based on a simple principle of success: sophisticated and innovative technology, made from high-end materials.

24/7 use

The FDU2603WT is built for 24-hour use and is characterised by maximum reliability.



50001. This includes measures to reduce waste, wastewater and emissions, resource and energy consumption, as well as to encourage environmentally conscious behavior among employees. We publicly report on these measures on an annual basis.



Sustainability

Environmentally and socially conscious production

Sustainable and durable

The FDU2603WT is designed to have a long service life and normally outlasts the warranty period by some distance. Replacement parts are available many years after production has ceased. The entire lifecycle takes into account the impact on the environment as the longevity of the product and the fact it can be repaired saves resources and protects the environment. When designing the FDU2603WT, we took a minimalistic approach to our resources by using high-quality components and materials, as well as a careful production process.

Socially responsible production

The FDU2603WT is produced in a socially responsible way. It is free of child labour and forced labour. Suppliers along the supply chain have been carefully selected and they have also committed themselves to produce in a socially responsible way. This applies in particular to conflict minerals. We present a detailed report about our social responsibility annually and voluntarily.

Environmentally and climate friendly

Each FDU2603WT is manufactured in our own factory, which implements an environmental and energy management system in accordance with ISO 14001 und ISO

Technical Data

GENERAL

| | |
|----------------------|------------|
| Item no. | FDU2603WT |
| Case color | Black |
| Areas of application | Industry |
| Product line | DuraVision |
| Areas of application | Maritime |

SCREEN

| | |
|---|--|
| Screen size [in inches] | 26 |
| Screen size [in cm] | 65 |
| Format | 16:10 |
| Viewable image size (width x height) [in mm] | 550 x 343 |
| Ideal and recommended resolution | 1920 x 1200 |
| Pixel pitch [in mm] | 0,29 x 0,2865 |
| Panel technology | VA |
| Max. viewing angle horizontal | 176 |
| Max. viewing angle vertical | 176 |
| Number of colors or greyscale | 16.7 million colors (D-Sub, 8 Bit), 16.7 million colors (DVI, 8 Bit) |
| Max. brightness (typical) [in cd/m ²] | 470 |
| Max. dark room contrast (typical) | 1500:1 |
| Response time black/white/black change (typical) | 10/10 |
| Backlight | LED |

FEATURES & OPERATION

| | |
|------------------------------|--|
| Preset color/greyscale modes | 1x manual memory location, Day, Night, Dusk |
| 24/7 operation | ✓ |
| On-screen menu languages | en |
| Adjustment options | Signal information, Color Mode, Brightness, Contrast, Color temperature/White point, Gamma, Colour tone, Color saturation, Alignment, Backlight Off Mode, ECDIS Indicator, Power Indicator, Signal input, Key lock |
| Integrated power unit | ✓ |
| Touchscreen | ✓ |
| Touch panel type | Projected capacitive (PCAP) |
| Touch compatible OS | Windows 8.1 (64-bit/32-bit), Windows 11, Windows 10 |
| Touch points | 5 |

DIMENSIONS & WEIGHT

| | |
|---|---|
| Dimensions (without stand) (width x height x depth) [in mm] | 624 x 456 x 86 |
| Weight (without stand) [in kg] | 15.1 |
| Dimension drawing (PDF) | Dimension drawing (PDF) |

Find your EIZO contact:
 EIZO Europe GmbH
 Belgrader Straße 2
 41069 Mönchengladbach
 Phone: +49 2161 8210-0
www.eizo.eu

All product names are trademarks or registered trademarks of EIZO Corporation in Japan and other countries or their respective companies. Copyright © 2024 EIZO Europe GmbH, Belgrader Str. 2, 41069 Mönchengladbach, Germany. All rights, errors and modifications reserved. Latest update: 11.12.2024

CONNECTIONS

| | |
|--------------------|--|
| Touch port | USB |
| Signal inputs | DVI-D (HDCP 1.4), D-Sub |
| Signal outputs | D-Sub mini 15 pin (through-out (active)) |
| USB specification | USB 2 |
| USB upstream ports | 1 x type B |
| Graphic signal | DVI Single Link (TMDS), RGB Analog |
| Control port | RS-232C, USB-Protocol |
| Sync formats | Separate, Composite |

ELECTRICAL DATA

| | |
|--|---|
| Frequency | DVI-D: 31-76 kHz/59-61 Hz; Dsub: 31-81 kHz/56-76 Hz |
| Maximum Power Consumption [in watts] | 108 |
| Power consumption with power switch off [in watts] | 0 |
| Power supply | AC: Rating AC 100 - 240 V (Operating: AC 85-264 V), 50/60 Hz, 1,2 A (AC 100 V) / 0,6 A (AC 200 V); DC: Rating DC+24 V (Operating: +30 % / -10 %), 4,5 A (DC 24 V) |
| Power management | ✓ |

CERTIFICATION & STANDARDS

| | |
|----------------------------|---|
| IP rating/protection class | IP65 (rear IP22) |
| Operating temperature | -15 - 55 °C / 10 - 90 % (R.H., non condensing) |
| Compass Safe Distance | Standard compass: 1,5 m, Steering compass: 1 m |
| Certification | Ship Classification: DNV (Norway), NK (Japan), LR (UK), ABS (USA), CE, CB, RoHS, WEEE, China RoHS, IEC60945, IEC61174, IEC62288, KC (K60950-1,K00022, K00024) |

SOFTWARE & ACCESSORIES

| | |
|-------------|--|
| Accessories | TP5 (Touch panel pointers), MDS-T261 (Stand for 26-inch Maritime Monitors) |
|-------------|--|

WARRANTY

| | |
|------------------|---------|
| Warranty periode | 3 years |
|------------------|---------|