

[→ Product Website](#)

2-megapixel medical touch monitor

The EIZO MS236WT-A offers first-class image quality with a 16:9 aspect ratio, as well as modern multi-touch operation for digital image distribution. The device ships with a preset DICOM tone curve. Hence it displays the graytones of radiological images correctly. The advantage of this is that the screen display is much better suited to clinical review than images shown on conventional computer monitors. Thanks to IPS-LCD it also offers wide viewing angles. This makes the picture clear and distinct from various directions of view. The MS236WT-A detects up to 10 touches simultaneously and permits smooth and accurate stylus input. It ignores erroneous input, such as from the ball of the hand.

- ✓ 2 megapixel colour LCD monitor with touchscreen
- ✓ Greyscale display with DICOM® tone curve
- ✓ Multi-touch operation (for example zooming, scrolling, turning, moving)
- ✓ Smooth, precise stylus input with hand ball detection
- ✓ IPS-LCD panel with wide viewing angle
- ✓ Flicker-free picture display

Image quality

**Precise, high-contrast,
bright and crisp screen**

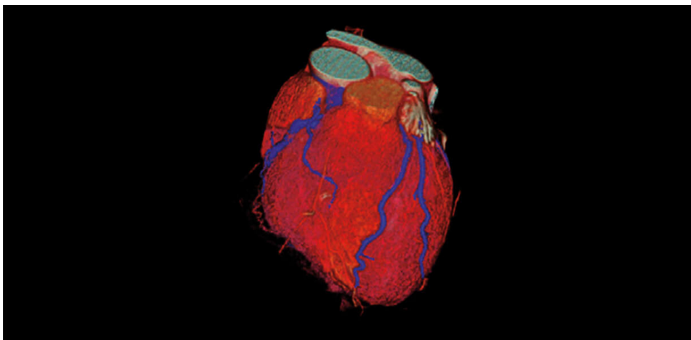
Excellent image quality for the finest details

Thanks to the high 2 Megapixels (colour) resolution, a strong contrast ratio of 1000:1 and stable brightness of up to 260 cd/m², the monitor offers excellent image quality. Even the differences between the finest details are shown – regardless of your viewing angle. This is a great advantage if multiple physicians are looking at the screen.

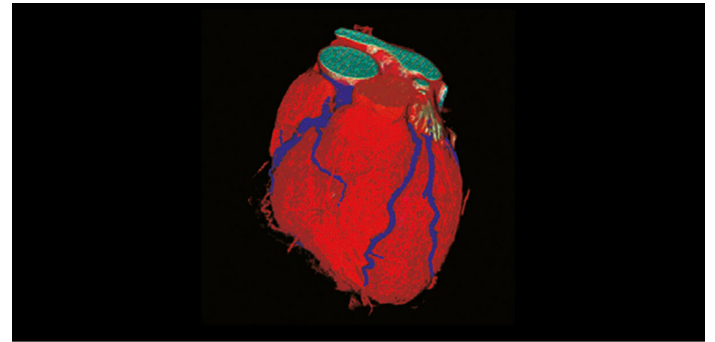


One billion color tones thanks to 10 bit LUT

An internal 10 bit LUT controls color rendering. The color gradations are considerably more exact and finer than the standard 8 bit LUTs, making clinical review easier.



Mit 10-Bit-LUT



Ohne 10-Bit-LUT

Touch functionality

**Operation with finger or
touch-pen**

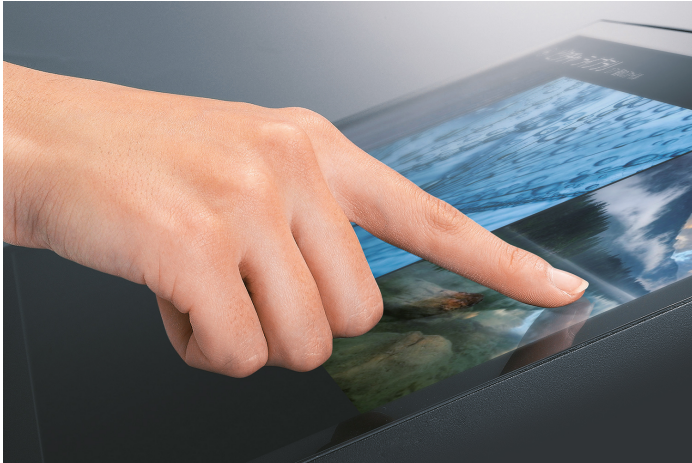
Fine, precise stylus input

The MS236WT-A contains reliable capacitive touch technology (PCAP) that detects movements with very high precision. Hence you can easily capture even small writing and character input via the screen.



Frameless touchscreen

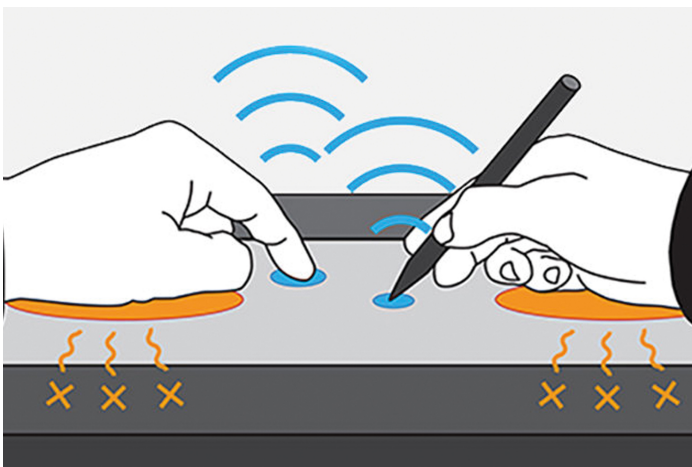
The display extends right up to the bezels – this means that the entire touch surface can be used without disruptions right up to the edges, which is particularly convenient for swiping and scrolling motions.



Multi-touch screen with robust surface

The monitor can detect up to ten simultaneous touches, which means that multiple individuals can operate the monitor at the same time. Furthermore, the touchscreen is equipped with hand ball recognition. While writing, users can place their hands or arms on the monitor without accidentally triggering an input.

With a hardness of 5H, the glass surface is insensitive to scratches and guarantees to recognize up to 50 million touches.



Touch detection and sensitivity

The monitor is equipped with technology that calibrates the touch sensitivity to minimise incorrect touch response due to environmental factors and electromagnetic noise. This ensures that the screen maintains accurate touch interaction during use.

Users can easily turn touch detection on or off by pushing the button conveniently located on the monitor's outer rim. A button is located on two sides of the monitor for easy access.



Touch operation without additional drivers

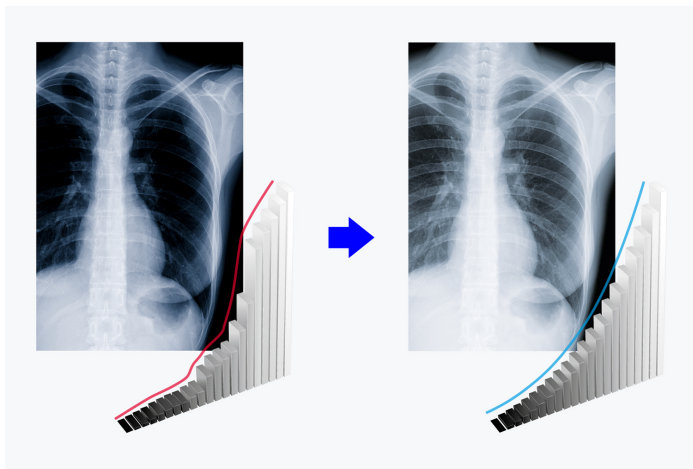
The multitouch interface is supported by standard Windows 11, 10 and 8.1 drivers. You can operate the touch panel without additional drivers by simply connecting the USB cable.

In addition to Windows standard touch drivers, a dedicated touch driver is also available to support touch interaction sounds and mouse emulation.

Improved comfort Efficiency in diagnostics

Display of DICOM[®] characteristic at the press of a button

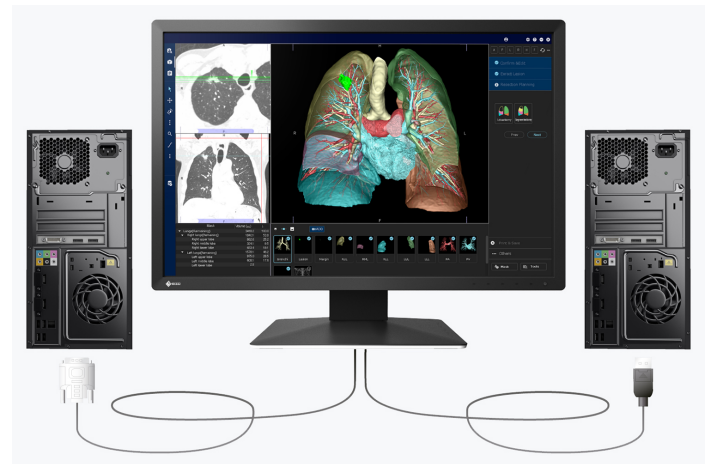
EIZO measures and adjusts each tone of grey carefully so that the monitors comply with the DICOM[®] standard when delivered from the factory. The result is a particularly consistent gradation of grey tones, allowing for optimal radiological clinical reviews.



With digital, analog, and audio connection

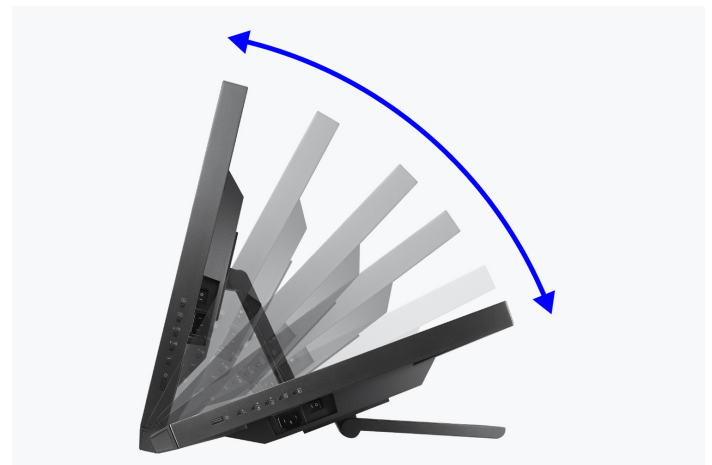
One DisplayPort and one HDMI input allow the connection of two digital signals simultaneously. A D-sub input is available for an analog signal. You can connect up to three computers simultaneously. You can switch between them automatically or manually, if desired.

A loudspeaker and headphone connection are subtly integrated in the housing. The audio connection to the monitor takes place via the DisplayPort or HDMI connection or the audio jack.



Reclining stand

The equipped stand provides flexible positioning to allow the monitor to rest on your desk like a laptop and recline back to your desired angle. This makes it easy to place the monitor in the ideal position for comfortable use in any environment.



Tilt by moving the base: 15° - 70°

Sustainability

Environmentally and socially conscious production

Sustainable and durable

The MS236WT-A is designed to have a long service life and normally outlasts the warranty period by some distance. Replacement parts are available many years after production has ceased. The entire lifecycle takes into account the impact on the environment as the longevity of the product and the fact it can be repaired saves resources and protects the environment. When designing the MS236WT-A, we took a minimalistic approach to our resources by using high-quality components and materials, as well as a careful production process.

Socially responsible production

The MS236WT-A is produced in a socially responsible way. It is free of child labour and forced labour. Suppliers along the supply chain have been carefully selected and they have also committed themselves to produce in a socially responsible way. This applies in particular to conflict minerals. We present a detailed report about our social responsibility annually and voluntarily.

Environmentally and climate friendly

Each MS236WT-A is manufactured in our own factory, which implements an environmental and energy management system in accordance with ISO 14001 und ISO 50001. This includes measures to reduce waste, wastewater and emissions, resource and energy consumption, as well as to encourage environmentally conscious behavior among employees. We publicly report on these measures on an annual basis.



SUSTAINABLE DEVELOPMENT GOALS

Our Contribution to SDGs

As part of its sustainability initiatives, EIZO is contributing towards the United Nations' Sustainable Development Goals (SDGs).

Supporting a Healthy Life

Starting with our message "Making Each Life Visual", we aim to support optimal medical care for each and every individual through accurate diagnosis and treatment afforded by our innovative healthcare technologies.

[Learn more](#)

Environmentally Conscious

Our healthcare products are designed to promote energy efficiency for reduced power consumption and greenhouse gas emissions, while maintaining the high performance and functionality needed in healthcare. We also implement a responsible after-service recycling system.

[Learn more](#)

- [Learn about the EIZO Group's sustainability initiatives, strategies, and more in the latest Integrated Report.](#)



Warranty

Highest investment security

Three-year warranty

EIZO grants a three-year warranty. This is possible thanks to the highly developed production process based on a simple principle of success: sophisticated and innovative technology, made from high-end materials.



Graphics board recommendation

For precise diagnostics

EIZO Graphics card MED-XN43

The EIZO graphics card supports the properties, functions, and settings of the RadiForce MS236WT-A optimally. It enables precise diagnosis and can control several monitors simultaneously. EIZO offers technical support and warranty service for the graphics card.

[To the graphics card overview](#)



Technical Data

GENERAL		FEATURES & OPERATION	
Item no.	MS236WT-A	Preset color/greyscale modes	2x manual memory locations, sRGB, DICOM
Case color	Black	DICOM tone curve	✓
Areas of application	Healthcare	Overdrive	✓
Product line	RadiForce	No flickering	✓
EAN	4995047062974	HDCP Decoder	✓
SCREEN		Automatic signal input recognition	✓
Screen size [in inches]	23	Built-in speakers	✓
Screen size [in cm]	58	On-screen menu languages	de, en, fr, es, it, se
Format	16:9	Adjustment options	Color Mode, Brightness, Contrast, Color temperature /White point, Gamma, Overdrive, Colour tone, Color saturation, Resolution, Scaling, Touch function On/Off, OSD language, Signal input, Volume, Key lock
Viewable image size (width x height) [in mm]	509,2 x 286,4	Touchscreen	✓
Resolution in MP	2 Megapixels (colour)	Touch panel type	Projected capacitive (PCAP)
Ideal and recommended resolution	1920 x 1080 (Full HD)	Touch compatible OS	Windows 8.1 (64-bit/32-bit), Windows 11, Windows 10
Pixel pitch [in mm]	0,265 x 0,265	Touch points	10
Supported resolutions	1920 x 1080 (Full HD), 1680 x 1050, 1280 x 1024, 1024 x 768, 800 x 600, 720 x 400, 640 x 480	ELECTRICAL DATA	
Panel technology	IPS	Frequency	Display Port: 31-68 kHz/59-61 Hz; HDMI: 31-68 kHz/59-61 Hz; D-Sub: 31-81 kHz/55-76 Hz
Max. viewing angle horizontal	178	Power consumption (typical) [in watts]	15
Max. viewing angle vertical	178	Maximum Power Consumption [in watts]	47 (at maximum brightness with all signal inputs and USB ports in use)
Number of colors or greyscale	16.7 million colors (D-Sub, 8 Bit), 16.7 million colors (DisplayPort, 8 Bit), 16.7 million colors (HDMI, 8 Bit)	Max. Power consumption in stand-by mode [in watts]	0.5
Color palette/look-up table	1.06 billion color tones / 10 Bit	Power consumption with power switch off [in watts]	0
Max. color space (typical)	sRGB (100%)	Energy consumption/1000h [in kWh]	17
Max. brightness (typical) [in cd/m ²]	260	Power supply	AC 100-240V, 50/60Hz
Max. dark room contrast (typical)	1000:1	DIMENSIONS & WEIGHT	
Response time grey-grey alternation (typical) [in ms]	11	Dimensions (incl. stand) (width x height x depth) [in mm]	556,7 x 143,9-353,9 x 216,3-401,3
Max. refresh rate [in Hz]	60	Weight (incl. stand) [in kg]	6.6
Backlight	LED	Dimensions (without stand) (width x height x depth) [in mm]	556,7 x 339,2 x 54
CONNECTIONS		Weight (without stand) [in kg]	6
Touch port	USB	Dimension drawing (PDF)	Dimension drawing (PDF)
Signal inputs	DisplayPort (HDCP 1.3), HDMI (HDCP 1.4), D-Sub	Tiltability forwards/backwards [in °]	15 / 70
USB specification	USB 5Gbps (USB 3)	Hole spacing	100 x 100
USB upstream ports	1 x type B	CERTIFICATION & STANDARDS	
USB downstream ports	2x type A	Operating temperature	5 - 35 °C / 20 - 80 % (R.H., non condensing)
Graphic signal	RGB Analog, DisplayPort, HDMI (RGB, YUV)	Certification	CE (Medical Device), CSA C22.2 Nr. 601-1, EN60601-1, IEC60601-1, RCM, FCC-B, CAN ICES-3 (B), PSE, VCCI-B, RoHS, WEEE, China RoHS, CCC, BIS, EAC
Control port	USB-Protocol		
Sync formats	Separate		
Audio input	3.5 mm stereo jack, DisplayPort, HDMI		

SOFTWARE & ACCESSORIES

Other box contents	Touch pen incl. mount, USB cable (Type A - Type B), Manual via download, Power cord
Accessories	PM200-K (DisplayPort cable to transfer digital video and audio signals), CP200 (USB-C to DisplayPort cable), PP100-K (DisplayPort cable), TP5 (Touch panel pointers)
Recommended graphics card	MED-XN43

WARRANTY

Warranty periode	3 years
-------------------------	---------

Find your EIZO contact:
EIZO Europe GmbH
Belgrader Straße 2
41069 Mönchengladbach
Phone: +49 2161 8210-0
www.eizo.eu

All product names are trademarks or registered trademarks of EIZO Corporation in Japan and other countries or their respective companies. Copyright © 2025 EIZO Europe GmbH, Belgrader Str. 2, 41069 Mönchengladbach, Germany. All rights, errors and modifications reserved. Latest update: 09.03.2025