



[→ Product Website](#)

1-megapixel medical monitor

The 19-inch MX194 with a traditional 5:4 aspect ratio stands out thanks to its factory-preset DICOM® characteristic curve, which guarantees faithful reproduction of radiological images in greyscale. The one megapixel screen achieves consistently stable brightness levels thanks to LED technology. The MX194 also shines in terms of colour purity and illumination thanks to the Digital Uniformity Equalizer. This allows the monitor to correctly display hues and greyscale tones of radiological images across the entire screen. That is ideal for clinical review of images from digital image distribution. In summary, the MX194 is ideally suited for referring medical specialists.

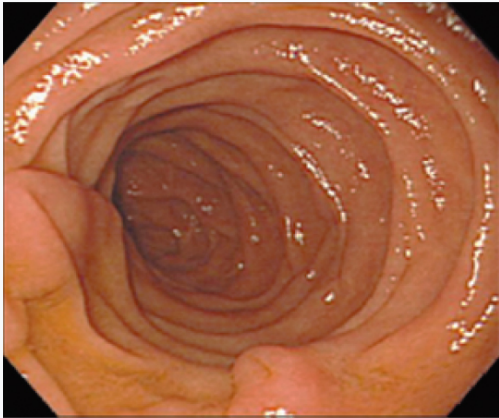
- ✓ 1.3 megapixel colour LCD monitor
- ✓ Grey tone rendering with DICOM® characteristic curve
- ✓ Homogenous display surface with automatic luminance distribution control (Digital Uniformity Equaliser)
- ✓ Automatic luminance control
- ✓ DisplayPort, DVI-D and D-sub inputs for digital and analogue connection
- ✓ 5-year warranty for highest investment security

Image quality

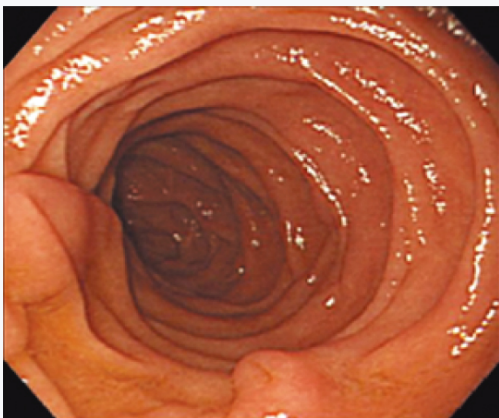
Precise, high-contrast, bright and crisp screen

Excellent image quality for the finest details

Featuring a VA panel, the MX194 achieves a high contrast ratio of 2000:1. This is crucial for achieving crisp images with deep black tones and high colour differentiation. The monitor is able to offer excellent image quality thanks to a high resolution of 1.3 Megapixels (colour) and a stable brightness of up to 350 cd/m². Even the finest details are presented in a differentiated manner, no matter from which viewing angle the monitor is viewed. This is a great advantage when several doctors are looking at the same screen.



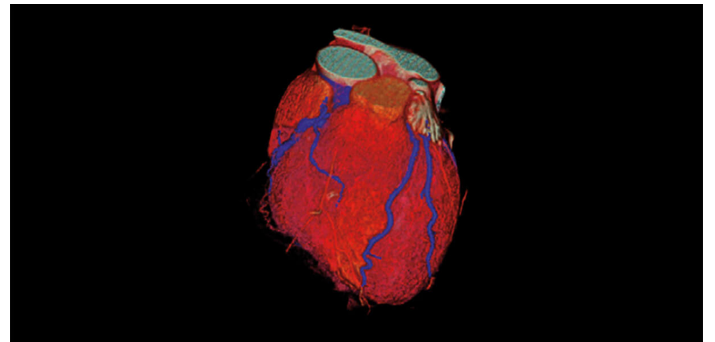
LCD



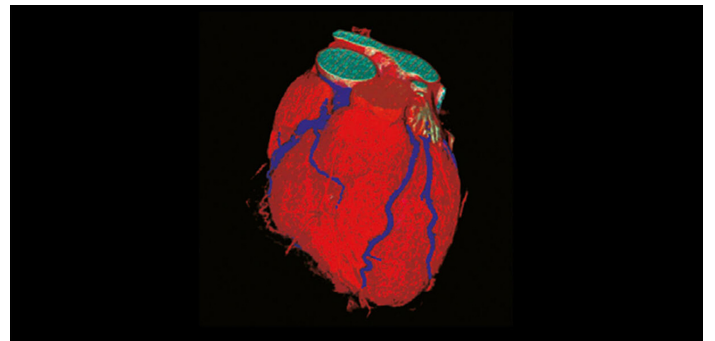
VA

One billion color tones thanks to 13 bit LUT

Color rendering is controlled by a 13 bit look-up table (LUT), up to 10 bits of which are available in the Display-Port connection. This produces a resolution with a maximum of 1 billion color tones. The rendering characteristic and fine structures required for diagnostics can therefore be precisely identified.



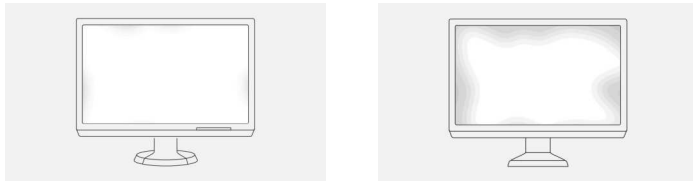
With 13 bit LUT



Without 13 bit LUT

Uniform brightness and high color purity

The monitor shines thanks to its high color purity and uniform illumination. This is down to the Digital Uniformity Equalizer (DUE), which corrects imbalances automatically, pixel by pixel. Gray and color tones of radiological and other medical images are correctly rendered over the entire display. This is essential for precise image reproduction.

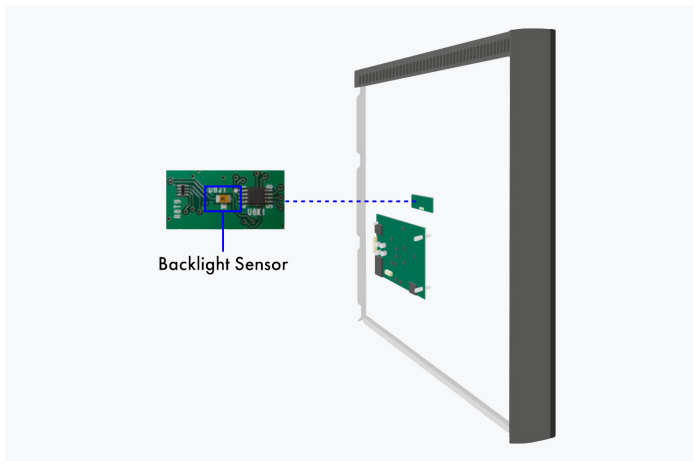


With DUE

Without DUE

Constant brightness during operation

A sensor for the backlight permanently determines the luminance of the monitor. The benefit: The defined and calibrated values are rendered exactly just seconds after the monitor is turned on and remain constant during the entire period of use. The sensor is invisibly integrated in the monitor.



Back of the monitor

Improved comfort Efficiency in diagnostics

Extended durations of use thanks to automatic shut down

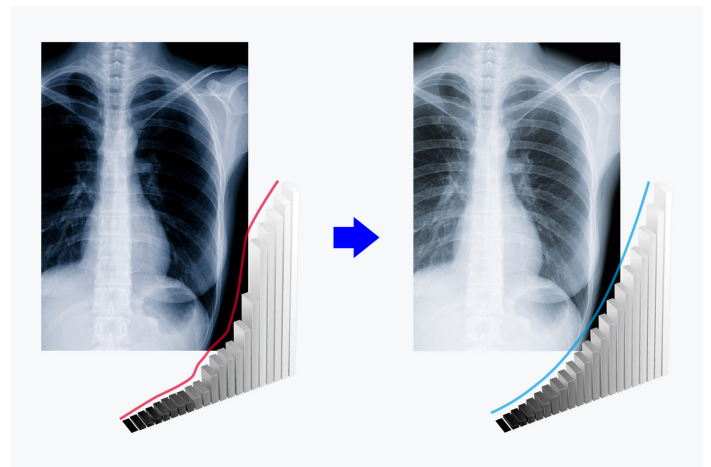
The monitor has an automatic shut down option for the backlight (backlight saver). This extends the duration of

use. Similar to a screen saver, the LEDs turn off when the screen is not being used.

The backlight saver is part of the [RadiCS software](#).

Display of DICOM® characteristic at the press of a button

EIZO measures and adjusts each tone of grey carefully so that the monitors comply with the DICOM® standard when delivered from the factory. The result is a particularly consistent gradation of grey tones, allowing for optimal radiological clinical reviews.



Sustainability Environmentally and socially conscious production

Sustainable and durable

The MX194 is designed to have a long service life and normally outlasts the warranty period by some distance. Replacement parts are available many years after production has ceased. The entire lifecycle takes into account the impact on the environment as the longevity of the product and the fact it can be repaired saves resources and protects the environment. When designing the MX194, we took a minimalistic approach to our resources by using high-quality components and materials, as well as a careful production process.

Socially responsible production

The MX194 is produced in a socially responsible way. It is free of child labour and forced labour. Suppliers along the supply chain have been carefully selected and they have also committed themselves to produce in a socially responsible way. This applies in particular to conflict minerals. We present a detailed report about our social responsibility annually and voluntarily.

Environmentally and climate friendly

Each MX194 is manufactured in our own factory, which implements an environmental and energy management system in accordance with ISO 14001 und ISO 50001. This includes measures to reduce waste, wastewater and emissions, resource and energy consumption, as well as to encourage environmentally conscious behavior among employees. We publicly report on these measures on an annual basis.



Warranty

Highest investment security

Five-year warranty

EIZO grants a five-year warranty. This is possible thanks to the highly developed production process based on a simple principle of success: sophisticated and innovative technology, made from high-end materials.



Graphics board recommendation

For precise diagnostics

EIZO Graphics card MED-XN43

The EIZO graphics card supports the properties, functions, and settings of the RadiForce MX194 optimally. It enables precise diagnosis and can control several monitors simultaneously. EIZO offers technical support and warranty service for the graphics card.

[To the graphics card overview](#)



Technical Data

| GENERAL | |
|---|---|
| Item no. | MX194 |
| Case color | Black |
| Areas of application | Healthcare |
| Product line | RadiForce |
| EAN | 4995047052777 |
| SCREEN | |
| Screen size [in inches] | 19 |
| Screen size [in cm] | 48,1 |
| Format | 4:5 |
| Viewable image size (width x height) [in mm] | 301 x 376 |
| Resolution in MP | 1.3 Megapixels (colour) |
| Ideal and recommended resolution | 1280 x 1024 |
| Pixel pitch [in mm] | 0,29 x 0,29 |
| Panel technology | VA |
| Max. viewing angle horizontal | 178 |
| Max. viewing angle vertical | 178 |
| Number of colors or greyscale | 1.07 billion colors (DisplayPort, 10 Bit), 16.7 million colors (D-Sub, 8 Bit), 16.7 million colors (DVI, 8 Bit) |
| Color palette/look-up table | 543 billion colour tones / 13 bit |
| Max. brightness (typical) [in cd/m ²] | 350 |
| Factory calibrated brightness [in cd/m ²] | 180 |
| Max. dark room contrast (typical) | 2000:1 |
| Max. refresh rate [in Hz] | 60 |
| Backlight | LED |
| FEATURES & OPERATION | |
| Preset color/greyscale modes | 2x manual memory locations, sRGB, Paper, DICOM |
| DICOM tone curve | ✓ |
| Hardware calibration of brightness and light density characteristic curve | ✓ |
| Digital Uniformity Equalizer (homogeneity correction) | ✓ |
| Sensors | Ambient Light Sensor, Backlight Sensor |
| On-screen menu languages | de, en, fr, es, it, se |
| Adjustment options | Pathology tonal value, Brightness, Color temperature /White point, Gamma, Color saturation, Resolution, Scaling, OSD language |
| Integrated power unit | ✓ |
| CONNECTIONS | |
| Signal inputs | DisplayPort (HDCP 1.3), DVI-D (HDCP 1.4), D-Sub |
| USB specification | USB 2 |
| USB upstream ports | 1 x type B |
| Graphic signal | DVI Single Link (TMDS), RGB Analog, DisplayPort |
| ELECTRICAL DATA | |
| Frequency | Digital: 31-64 kHz/59-61 Hz; Analog: 24,8-80 kHz/50-75 Hz |
| Power consumption (typical) [in watts] | 15 |
| Maximum Power Consumption [in watts] | 28 (at maximum brightness with all signal inputs and USB ports in use) |
| Max. Power consumption in stand-by mode [in watts] | 0.6 |
| Power consumption with power switch off [in watts] | 0 |
| Power supply | AC 100-240V, 50/60Hz |
| DIMENSIONS & WEIGHT | |
| Dimensions (incl. stand) (width x height x depth) [in mm] | 405 x 406,5-506,5 x 205 |
| Weight (incl. stand) [in kg] | 6 |
| Weight (without stand) [in kg] | 4.2 |
| Dimension drawing (PDF) | Dimension drawing (PDF) |
| Tiltability forwards/backwards [in °] | 0 / 30 |
| Pivot between portrait / landscape | clockwise |
| Height adjustment range [in mm] | 100 |
| Hole spacing | 100 x 100 |
| CERTIFICATION & STANDARDS | |
| Certification | CE (Medical Device), ANSI/AAMI ES60601-1, CSA C22.2 Nr. 601-1, EN60601-1, IEC60601-1, RCM, FCC-B, CAN ICES-3 (B), VCCI-B, RoHS, WEEE, China RoHS, CCC, EAC |
| SOFTWARE & ACCESSORIES | |
| Accompanying software and other accessories are available for download | RadiCS LE |
| Other box contents | USB cable (Type A - Type B), Signal cable DisplayPort - DisplayPort, Power cord |
| Accessories | RadiCS (UX2-Kit) (The EIZO software is capable of complete quality management – from calibration through asset management to acceptance and constancy testing.), MED-XN43 (MED-XN43, optimal speed for 2D radiology), RadiNET Pro (EIZO software for network-based quality management in large facilities – with remote functionality for monitors) |
| Recommended graphics card | MED-XN43 |
| WARRANTY | |
| Warranty periode | 5 years |

Find your EIZO contact:
 EIZO Europe GmbH
 Belgrader Straße 2
 41069 Mönchengladbach
 Phone: +49 2161 8210-0
www.eizo.eu